

eco**colore**

# architecture

GRANITOGRES



CASALGRANDE  
PADANA  
Pave your way



# architecture

GRANITOGRES



architecture cool grey *matt* cm 90x90 - 35<sup>3</sup>/<sub>8</sub>"x35<sup>3</sup>/<sub>8</sub>"

## COLORI COLOURS COULEURS FARBEN

architecture black matt



architecture dark grey matt



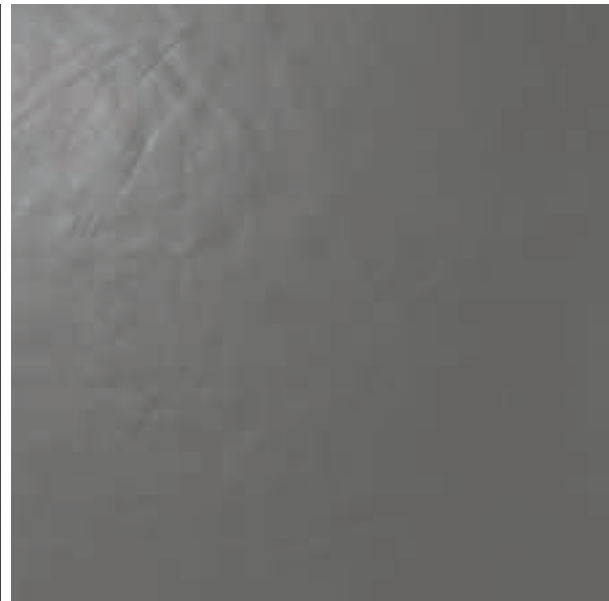
architecture medium grey matt



architecture black gloss



architecture dark grey gloss



architecture medium grey gloss

# architecture

GRANITOGRES

architecture light grey matt



architecture cool grey matt



architecture warm grey matt



architecture light grey gloss

architecture cool grey gloss

architecture warm grey gloss

## COLORI COLOURS COULEURS FARBEN

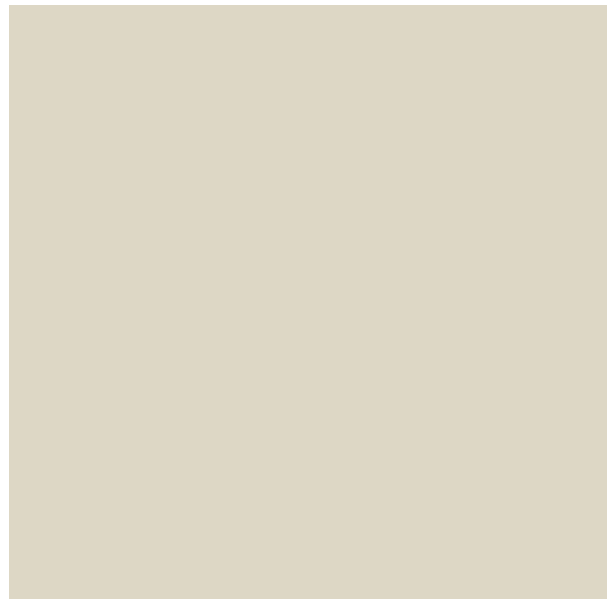
architecture light brown matt



architecture dark ivory matt



architecture light ivory matt



architecture light brown gloss



architecture dark ivory gloss



architecture light ivory gloss

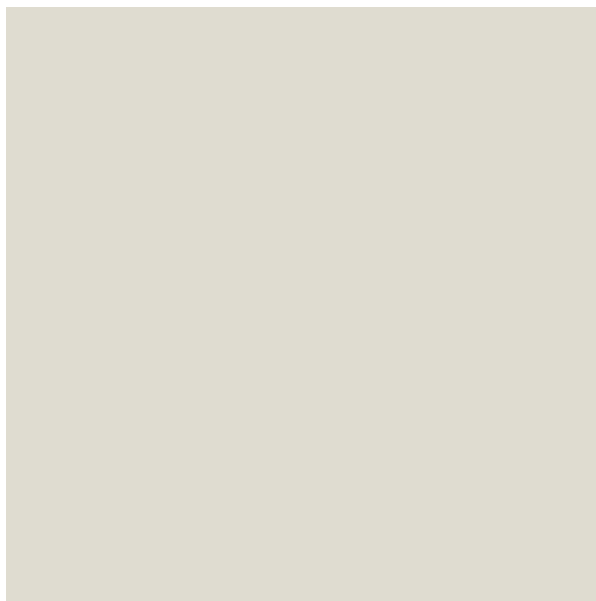
# architecture

GRANITOGRES

architecture beige matt



architecture white matt



architecture beige gloss



architecture white gloss

## COLORI COLOURS COULEURS FARBEN

**architecture purple matt**



**architecture acid green matt**



**architecture purple gloss**

**architecture acid green gloss**



SUPERFICI SURFACES  
SURFACES OBERFLÄCHEN

**architecture**

GRANITOGRES

levigata polished polie poliirt

naturale matt naturelle matt R9

gloss R9

## FORMATI SIZES FORMATS FORMATE

Formati Sizes Formats Formate	<b>cm 30x30</b> 11 <sup>3</sup> / <sub>4</sub> "x11 <sup>3</sup> / <sub>4</sub> "	<b>cm 15x60</b> 5 <sup>7</sup> / <sub>8</sub> "x23 <sup>5</sup> / <sub>8</sub> "	<b>cm 30x60</b> 11 <sup>3</sup> / <sub>4</sub> "x23 <sup>5</sup> / <sub>8</sub> "	<b>cm 60x60</b> 23 <sup>5</sup> / <sub>8</sub> "x23 <sup>5</sup> / <sub>8</sub> "	<b>cm 15x90*</b> 5 <sup>7</sup> / <sub>8</sub> "x35 <sup>3</sup> / <sub>8</sub> "	<b>cm 45x90*</b> 17 <sup>3</sup> / <sub>4</sub> "x35 <sup>3</sup> / <sub>8</sub> "	<b>cm 90x90*</b> 35 <sup>3</sup> / <sub>8</sub> "x35 <sup>3</sup> / <sub>8</sub> "	<b>cm 60x120</b> 23 <sup>5</sup> / <sub>8</sub> "x47 <sup>1</sup> / <sub>4</sub> "
Superfici Surfaces Surfaces Oberflächen	●	● ●	● ● ●	● ● ●	●	●	●	●
	mm 9,4	mm 9,4	mm 9,4	mm 9,4	mm 10	mm 10	mm 10	mm 9,4



Uniforme  
Uniform  
Uniforme  
Einheitliche

Vedi pagina: See page: Voir page : Siehe Seite: **448**

- Naturale Matt Naturelle Matt **R9**  
(A richiesta On request Sur demand Auf Anfrage **R10**)
- Gloss **R9**
- Levigata Polished Polie Poliert

Rettificate in un unico calibro Rectified version in a single calibrer Rectifiés en un unique calibre Boden Sie in einem einzigen Kaliber

\* Ad eccezione di: Except for: À l'exception de: Mit Ausnahme von: **Acid Green, Purple**

Nel caso di combinazioni di formati di spessori diversi, specificarlo espressamente nell'ordine

Please specify in your order if you wish to purchase formats including more than one thickness

Prière de spécifier dans votre commande si vous souhaitez acheter des formats avec différentes épaisseurs

Bitte weisen Sie im Bestellungsformular ausdrücklich darauf hin, wenn Sie Formatkombinationen mit verschiedenen Stärken wünschen

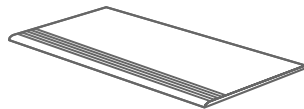
Caratteristiche tecniche e imballi a pagina: Technical features and packing on page: Caractéristiques techniques et emballages à la page: Technische Eigenschaften und Verpackungen auf Seite: **434**

## PEZZI SPECIALI TRIMS ACCESSOIRES FORMSTÜCKE

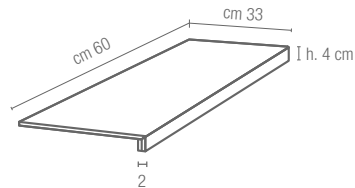
**Battiscopa Bullnose**  
**Plinthe à bord arrondi**  
**Stehsokkel**  
cm 9x90 - 3<sup>1</sup>/<sub>2</sub>"x35<sup>3</sup>/<sub>8</sub>"  
cm 9x60 - 3<sup>1</sup>/<sub>2</sub>"x23<sup>5</sup>/<sub>8</sub>"



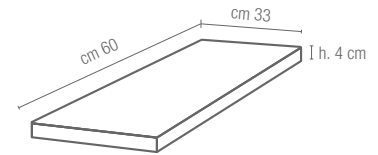
**Gradino Step tread**  
**Nez de marche Stufenplatte**  
cm 30x60 - 11<sup>3</sup>/<sub>4</sub>"x23<sup>5</sup>/<sub>8</sub>"  
cm 30x120 - 11<sup>3</sup>/<sub>4</sub>"x47<sup>1</sup>/<sub>4</sub>"



**Gradone (assemblato)**  
cm 60x33 - 23<sup>5</sup>/<sub>8</sub>"x13"



**Angolare (assemblato)**  
cm 60x33 - 23<sup>5</sup>/<sub>8</sub>"x13"



**architecture white,**  
**architecture black**  
cm 30x60 - 11<sup>3</sup>/<sub>4</sub>"x23<sup>5</sup>/<sub>8</sub>"



DECORI DECORS DÉCORS DEKORE

# architecture

GRANITOGRES

**mix listelli  
architecture A**



**cm 30x30 - 11<sup>3</sup>/<sub>4</sub>"x11<sup>3</sup>/<sub>4</sub>"**  
listello **cm 1,4x30 - 1/2"x11<sup>3</sup>/<sub>4</sub>"**  
*su rete on net sur trame auf Netz*  
**beige, dark ivory, light  
ivory, white**  
naturale matt naturelle matt

**mix listelli  
architecture B**



**cm 30x30 - 11<sup>3</sup>/<sub>4</sub>"x11<sup>3</sup>/<sub>4</sub>"**  
listello **cm 1,4x30 - 1/2"x11<sup>3</sup>/<sub>4</sub>"**  
*su rete on net sur trame auf Netz*  
**medium grey, dark grey,  
black**  
naturale matt naturelle matt

**mix listelli  
architecture C**



**cm 30x30 - 11<sup>3</sup>/<sub>4</sub>"x11<sup>3</sup>/<sub>4</sub>"**  
listello **cm 1,4x30 - 1/2"x11<sup>3</sup>/<sub>4</sub>"**  
*su rete on net sur trame auf Netz*  
**warm grey, cool grey,  
light grey, medium grey**  
naturale matt naturelle matt

**mix listelli  
architecture D**



**cm 30x30 - 11<sup>3</sup>/<sub>4</sub>"x11<sup>3</sup>/<sub>4</sub>"**  
listello **cm 1,4x30 - 1/2"x11<sup>3</sup>/<sub>4</sub>"**  
*su rete on net sur trame auf Netz*  
**beige, dark brown,  
light brown**  
naturale matt naturelle matt

**mix listelli\***



**cm 30x30 - 11<sup>3</sup>/<sub>4</sub>"x11<sup>3</sup>/<sub>4</sub>"**  
listello **cm 1,4x30 - 1/2"x11<sup>3</sup>/<sub>4</sub>"**  
*su rete on net sur trame auf Netz*

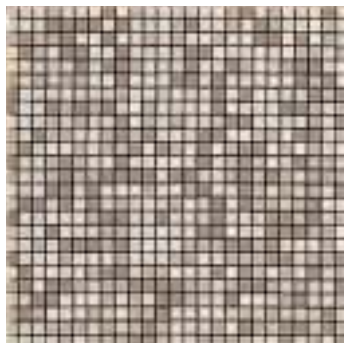
\* Disponibile in tutti i colori della serie  
Available in all the colours of the series  
Disponibile dans tous les couleurs de la série  
Verfügbar in allen Farben  
Listelli in superficie gloss e naturale  
Listellos in gloss and matt surface  
Listelli en surface naturelle et gloss  
Listelli Gloss und Natur Oberfläche



**mix listelli  
architecture C**  
**cm 30x30 - 11<sup>3</sup>/<sub>4</sub>"x11<sup>3</sup>/<sub>4</sub>"**  
**architecture medium grey gloss**  
**cm 60x60 - 23<sup>5</sup>/<sub>8</sub>"x23<sup>5</sup>/<sub>8</sub>"**

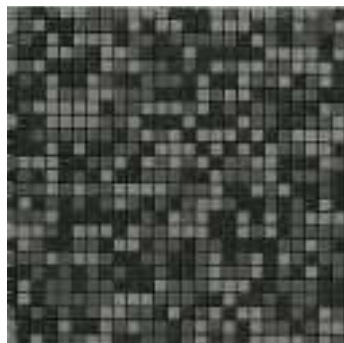
## DECORI DECORS DÉCORS DEKORE

**mosaico  
architecture A**



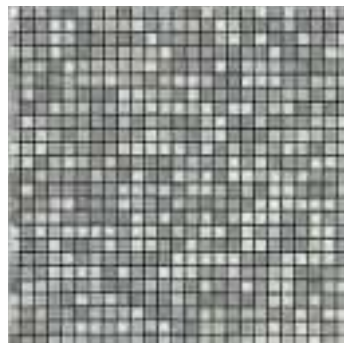
**cm 30x30 - 11<sup>3</sup>/<sub>4</sub>"x11<sup>3</sup>/<sub>4</sub>"**  
 tessera **cm 1x1 - 3<sup>3</sup>/<sub>8</sub>"x3<sup>3</sup>/<sub>8</sub>"**  
*su rete on net sur trame auf Netz*  
**beige, dark ivory,  
 light ivory, white**

**mosaico  
architecture B**



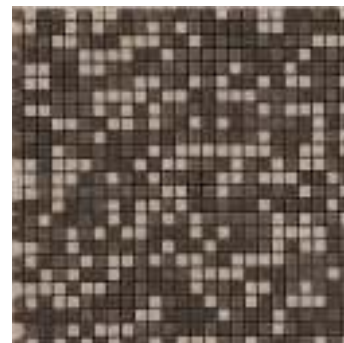
**cm 30x30 - 11<sup>3</sup>/<sub>4</sub>"x11<sup>3</sup>/<sub>4</sub>"**  
 tessera **cm 1x1 - 3<sup>3</sup>/<sub>8</sub>"x3<sup>3</sup>/<sub>8</sub>"**  
*su rete on net sur trame auf Netz*  
**medium grey,  
 dark grey, black**

**mosaico  
architecture C**



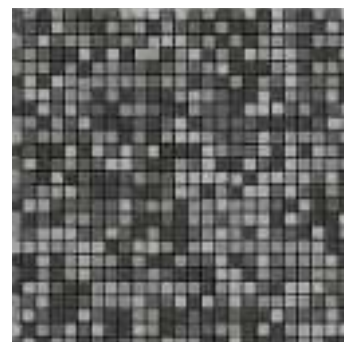
**cm 30x30 - 11<sup>3</sup>/<sub>4</sub>"x11<sup>3</sup>/<sub>4</sub>"**  
 tessera **cm 1x1 - 3<sup>3</sup>/<sub>8</sub>"x3<sup>3</sup>/<sub>8</sub>"**  
*su rete on net sur trame auf Netz*  
**warm grey, cool grey,  
 light grey, white**

**mosaico  
architecture D**



**cm 30x30 - 11<sup>3</sup>/<sub>4</sub>"x11<sup>3</sup>/<sub>4</sub>"**  
 tessera **cm 1x1 - 3<sup>3</sup>/<sub>8</sub>"x3<sup>3</sup>/<sub>8</sub>"**  
*su rete on net sur trame auf Netz*  
**beige, dark brown,  
 light brown**

**mosaico  
architecture E**



**cm 30x30 - 11<sup>3</sup>/<sub>4</sub>"x11<sup>3</sup>/<sub>4</sub>"**  
 tessera **cm 1x1 - 3<sup>3</sup>/<sub>8</sub>"x3<sup>3</sup>/<sub>8</sub>"**  
*su rete on net sur trame auf Netz*  
**dark grey, medium grey,  
 light grey, cool grey**



**mosaico architecture C**  
 cm 30x30 - 11<sup>3</sup>/<sub>4</sub>"x11<sup>3</sup>/<sub>4</sub>",  
**architecture cool grey gloss**  
 cm 60x60 - 23<sup>5</sup>/<sub>8</sub>"x23<sup>5</sup>/<sub>8</sub>"  
**architecture white matt**  
 cm 15x90 - 5<sup>7</sup>/<sub>8</sub>"x35<sup>3</sup>/<sub>8</sub>"

# architecture

GRANITOGRES

architecture dark grey gloss cm 60x60 - 23<sup>5</sup>/<sub>8</sub>"x23<sup>5</sup>/<sub>8</sub>"



CASALGRANDE  
PADANA  
Pave your way

via Statale 467, n. 73 - 42013 Casalgrande (Re) Italy  
tel + 39 0522 9901 - fax + 39 0522 996121  
info@casalgrandepadana.it - www.casalgrandepadana.com

